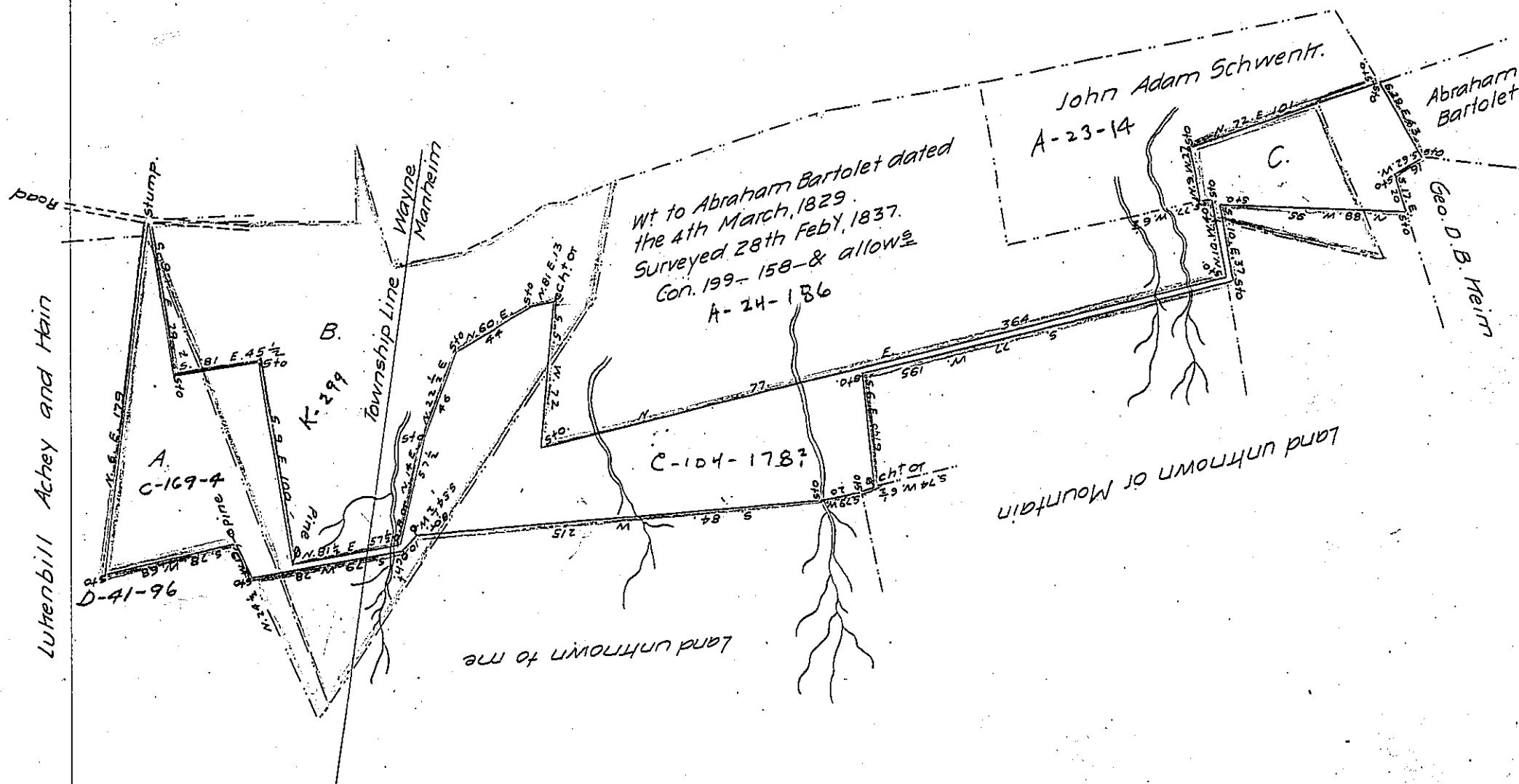


Form No. 3.

Diagram Letter A (Red Line) Wt. to Henry Madeford for 40 as of Land Containing by Survey made of Samuel B. Fisher, Esqr. 44 as. 81 p & allow<sup>s</sup>, Letter B; Red Line Wt. to Philip Conter for 100 as Containing <sup>red line</sup> by Survey made by Samuel B. Fisher & George Heisler, 200 as & allow<sup>s</sup>. Letter C, Wt. to James Everhard for 25 as, Containing by Survey made by John Dreher Esqr. late D.S. filed in my Office 26 as 23 p & allow<sup>s</sup>. The Blue Lines represents the Survey made for Abraham Bartolet's warrant dated the 12th Jan'y, 1839 for 200 as, Containing by survey 210 as 133 p & allow<sup>s</sup>.



Situate partly in Wayne and partly in Manheim Townships, in Schuylkill County, Containing 210 as 133 p & allow<sup>s</sup> of Six P. Cent for roads &c. Surveyed unto Abraham Bartolet on the 28th & 29th d<sup>s</sup> of June A.D. 1841. By Virtue of a Warrant granted to him dated the 12th day of January A.D. 1839, by To Jacob Salade, Esqr. Peter F. Ludwig, D.S. Surveyor General of Pennsylvania.

Recvd from Abraham Bartolet for the 100 133 p of land above the quantity called for in the the warrant. at the rate of two shillings per acre. amounting to 21. 8. Sept 11th 1841.

Peter F. Ludwig, D.S.

IN TESTIMONY that the above is a copy of the original remaining on file in the Department of Internal Affairs of Pennsylvania, made conformably to an Act of Assembly approved the 16th day of February, 1833, I have hereunto set my Hand and caused the Seal of said Department to be affixed at Harrisburg, this twenty third day of February 1912

Henry Hoover  
Secretary of Internal Affairs.